

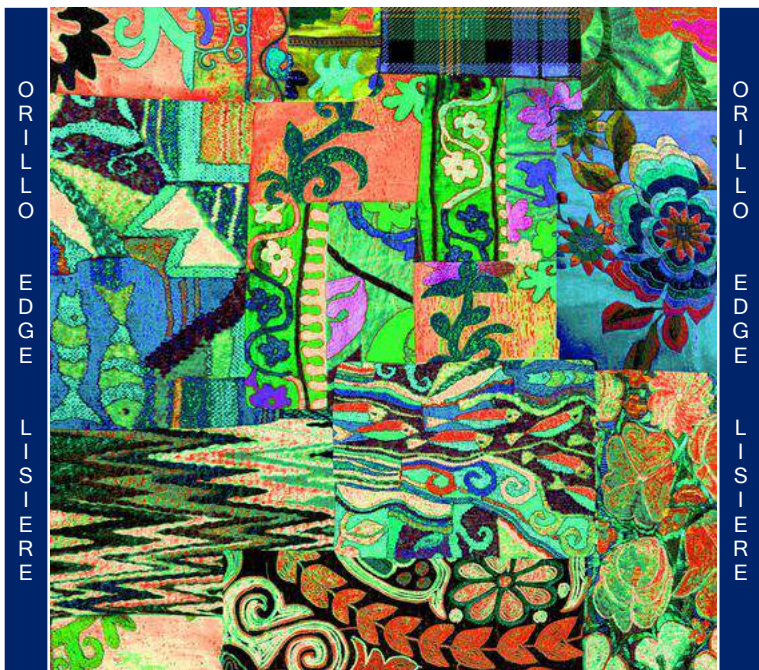
Kolibrí, Kulu y Kerala





JOVER

DESDE 1965



TIZIAN KERALA
Reference 034105334

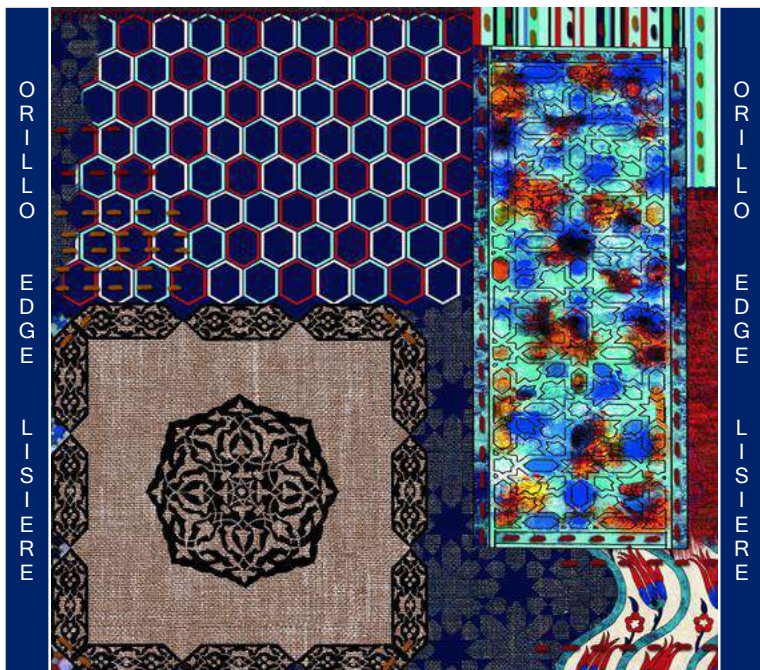
Composition: 100%PES
Useful width in cms: 140 cm.
Pattern repeat (height): 179,3
Pattern repeat (width): 140
Repeat for cutting cm.: 179,3
Design direction: Up the roll
Weight gsm: 443
Suitable for upholstery.
Martindale 30000 cycles.
Ligth fastness (max 8): 5/6
Pilling (max 5): 4/5
Shrinkage (warp): -0,10 %
Shrinkage (weft): -0,40 %



03.41053/34

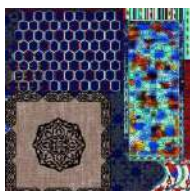
JOVER

DESDE 1965



TIZIAN KULU
Reference 034105544

Composition: 100%PES
Useful width in cms: 140 cm.
Pattern repeat (height): 100
Pattern repeat (width): 140
Repeat for cutting cm.: 100
Design direction: Up the roll
Weight gsm: 443
Suitable for upholstery.
Martindale 30000 cycles.
Ligth fastness (max 8): 5/6
Pilling (max 5): 4/5
Shrinkage (warp): -0,10 %
Shrinkage (weft): -0,40 %



03.41055/44

JOVER

DESDE 1965



TIZIAN KOLIBRI
Reference 034105204

Composition: 100%PES
Useful width in cms: 140 cm.
Pattern repeat (height): 96,2
Pattern repeat (width): 140
Repeat for cutting cm.: 96,2
Design direction: Up the roll
Weight gsm: 443
Suitable for upholstery.
Martindale 30000 cycles.
Ligth fastness (max 8): 5/6
Pilling (max 5): 4/5
Shrinkage (warp): -0,10 %
Shrinkage (weft): -0,40 %



03.41052/04