

# in&out Sha



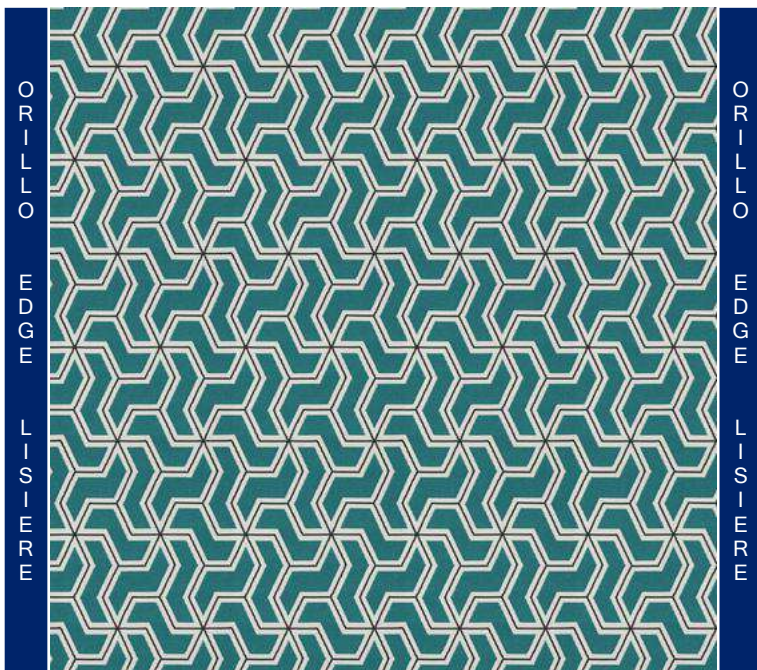






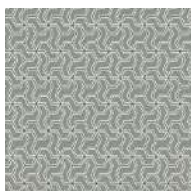
# JOVER

DESDE 1965

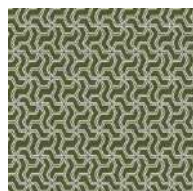


in&out SHA 00 UV TEFLON  
Reference 037430054

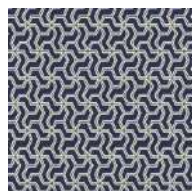
Composition: 100%PES  
Useful width in cms: 140 cm.  
Pattern repeat (height): 14  
Pattern repeat (width): 6  
Repeat for cutting cm.: 14  
Design direction: Up the roll  
Weight gsm: 464  
Suitable for upholstery.  
Martindale 30000 cycles.  
Suitable for outdoor use.  
Ligth fastness (max 8): 7  
Pilling (max 5): 4/5  
Anti-stain  
UV resistant  
Shrinkage (warp): 0,00 %  
Shrinkage (weft): 0,00 %



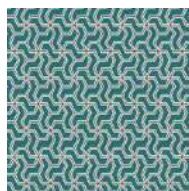
03.74300/2B



03.74300/1A



03.74300/4K



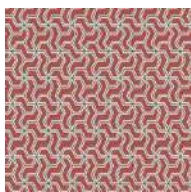
03.74300/54



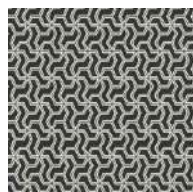
03.74300/7K



03.74300/21



03.74300/8D



03.74300/98



IN&OUT SHA 93 TEFLON  
Reference 037289354

Composition: 100%PES  
Useful width in cms: 140 cm.  
Pattern repeat (height): 3  
Pattern repeat (width): 2  
Repeat for cutting cm.: 3  
Design direction: Up the roll  
Weight gsm: 786  
Suitable for upholstery.  
Martindale 90000 cycles.  
Suitable for outdoor use.  
Ligth fastness (max 8): 7  
Pilling (max 5): 4/5  
Anti-stain  
UV resistant  
Shrinkage (warp): -0,50 %  
Shrinkage (weft): -0,50 %



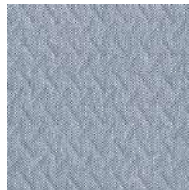
03.72893/2B



03.72893/98



03.72893/54



03.72893/4K



03.72893/21



03.72893/7K

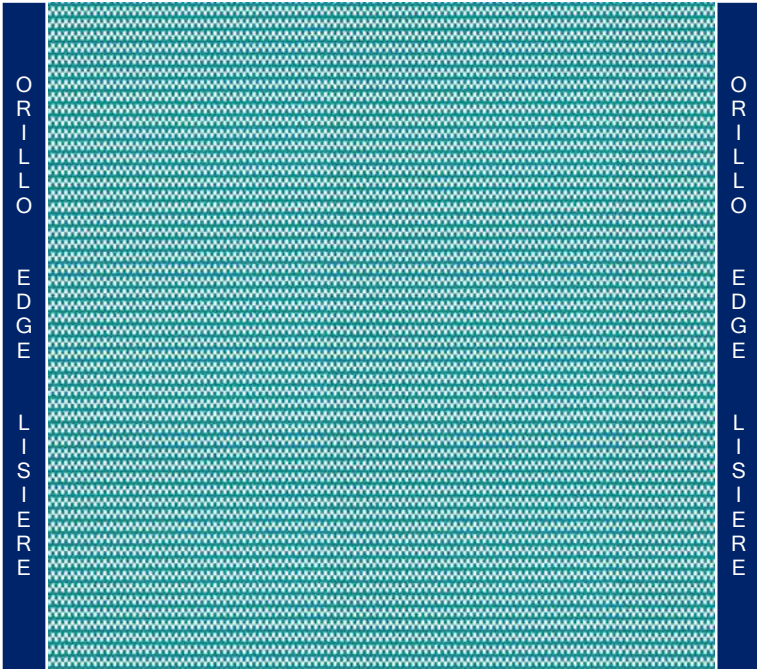


03.72893/8D



03.72893/1A



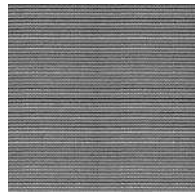


IN&OUT SHA 94 TEFLON  
Reference 037289454

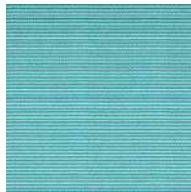
Composition: 100%PES  
Useful width in cms: 140 cm.  
Pattern repeat (height): 1  
Pattern repeat (width): 1  
Repeat for cutting cm.: 1  
Design direction: Up the roll  
Weight gsm: 571  
Suitable for upholstery.  
Martindale 90000 cycles.  
Suitable for outdoor use.  
Ligth fastness (max 8): 7  
Pilling (max 5): 4/5  
Anti-stain  
UV resistant  
Shrinkage (warp): -0,10 %  
Shrinkage (weft): -0,50 %



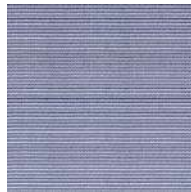
03.72894/2B



03.72894/98



03.72894/54



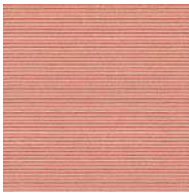
03.72894/4K



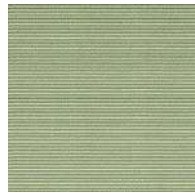
03.72894/21



03.72894/7K



03.72894/8D



03.72894/1A