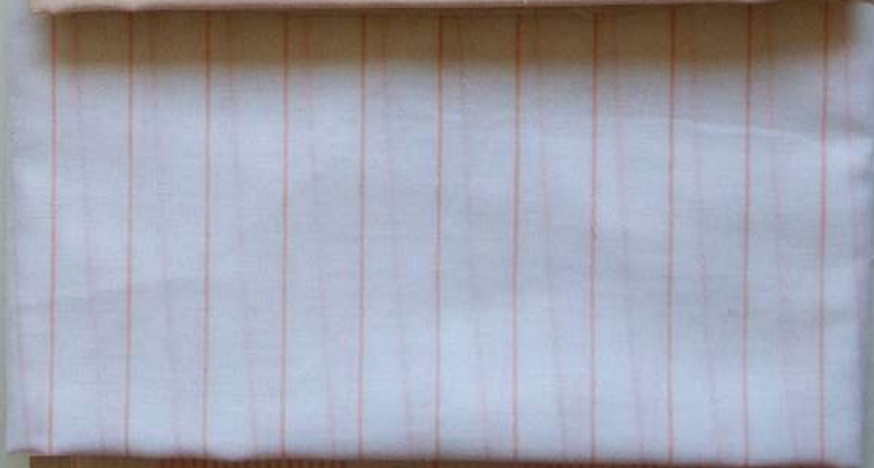
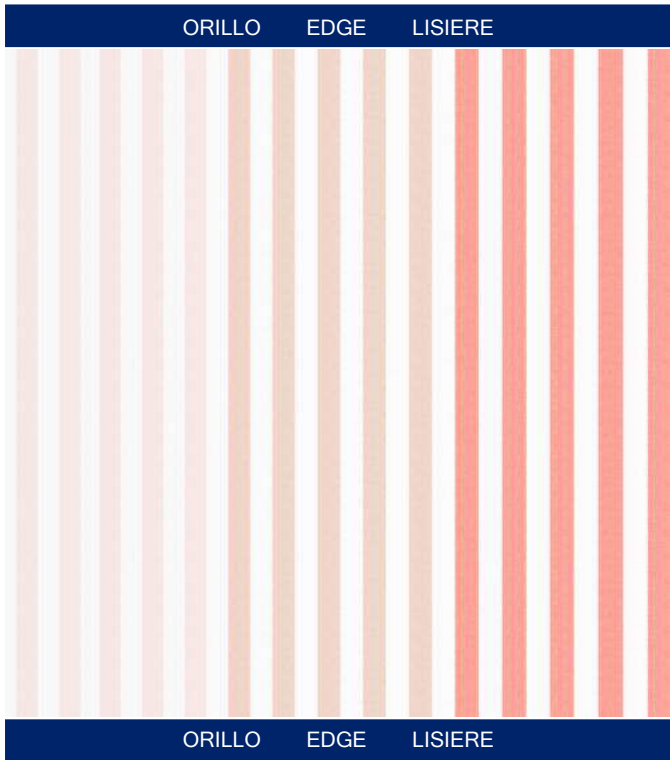


Vintage Recycled

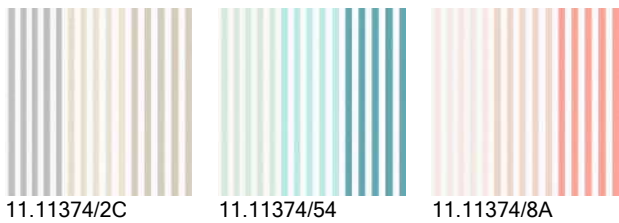






RECYCLED VINTAGE 74
Reference 11113748A

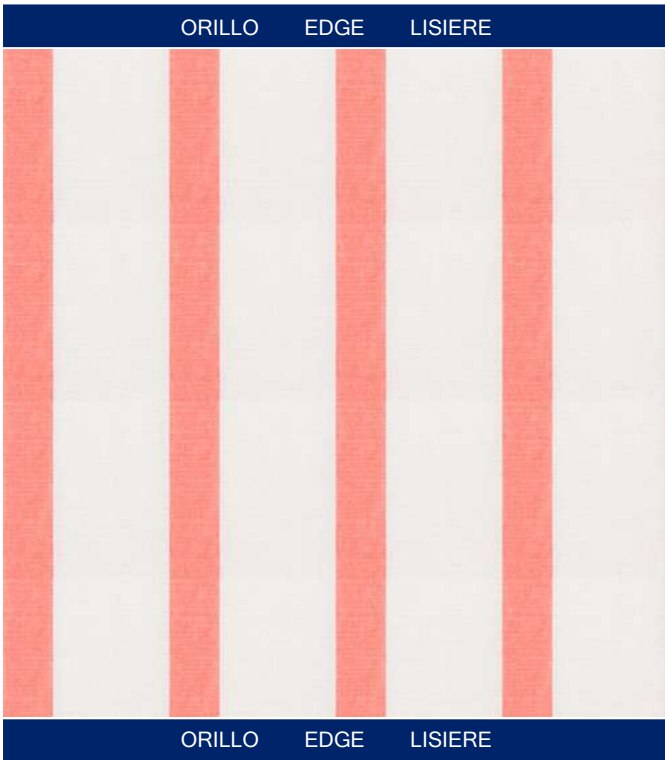
Composition: 70%PES 23%CO 7%LI (49%REC)
Useful width in cms: 300 cm.
Pattern repeat (height): plain
Pattern repeat (width): 0
Repeat for cutting cm.: plain
Design direction: Railroded
Finished edge: With lead cord
Weight gsm: 112
Ligth fastness (max 8): 6
Pilling (max 5): 2/3
Shrinkage (warp): -0,50 %
Shrinkage (weft): -2,00 %



11.11374/2C

11.11374/54

11.11374/8A



RECYCLED VINTAGE 75
Reference 11113758A

Composition: 70%PES 23%CO 7%LI (49%REC)
Useful width in cms: 300 cm.
Pattern repeat (height): 10
Pattern repeat (width): 1
Repeat for cutting cm.: 10
Design direction: Railroded
Finished edge: With lead cord
Weight gsm: 112
Ligth fastness (max 8): 6
Pilling (max 5): 2/3
Shrinkage (warp): -0,50 %
Shrinkage (weft): -2,00 %



11.11375/2C

11.11375/54

11.11375/4A

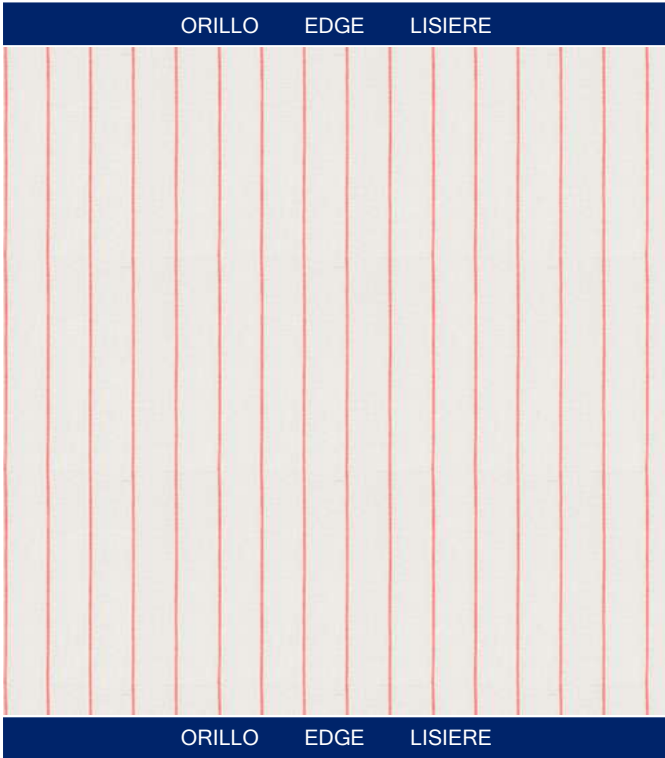
11.11375/30

11.11375/8A

11.11375/5B



11.11375/51



RECYCLED VINTAGE 77
Reference 11113778A

Composition: 70%PES 23%CO 7%LI (49%REC)
Useful width in cms: 300 cm.
Pattern repeat (height): 2,7
Pattern repeat (width): 1
Repeat for cutting cm.: 2,7
Design direction: Railroded
Finished edge: With lead cord
Weight gsm: 112
Ligth fastness (max 8): 6
Pilling (max 5): 2/3
Shrinkage (warp): -0,50 %
Shrinkage (weft): -2,00 %



11.11377/2C

11.11377/54

11.11377/4A

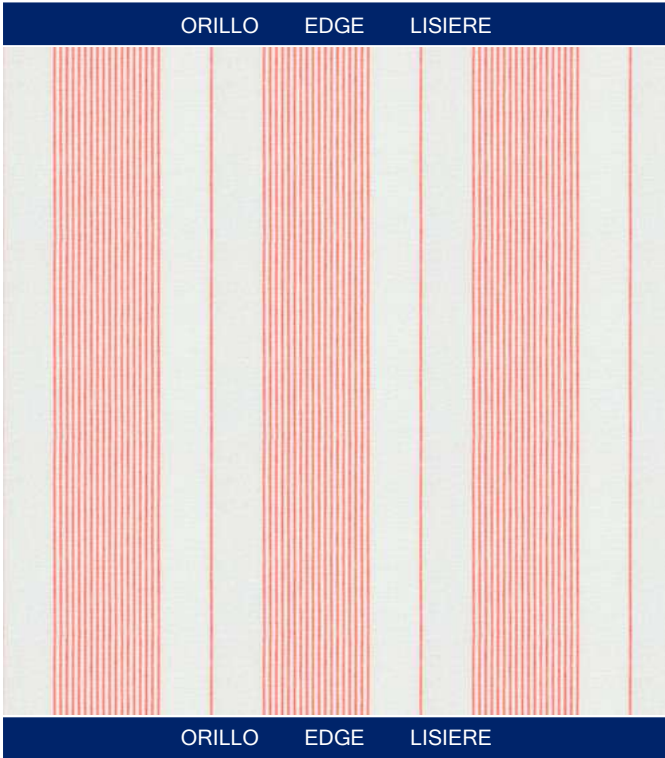
11.11377/30

11.11377/8A

11.11377/5B



11.11377/51



RECYCLED VINTAGE 79
Reference 11113798A

Composition: 70%PES 23%CO 7%LI (49%REC)
Useful width in cms: 300 cm.
Pattern repeat (height): 12,6
Pattern repeat (width): 1
Repeat for cutting cm.: 12,6
Design direction: Railroded
Finished edge: With lead cord
Weight gsm: 112
Ligth fastness (max 8): 6
Pilling (max 5): 2/3
Shrinkage (warp): -0,50 %
Shrinkage (weft): -2,00 %



11.11379/2C

11.11379/54

11.11379/4A

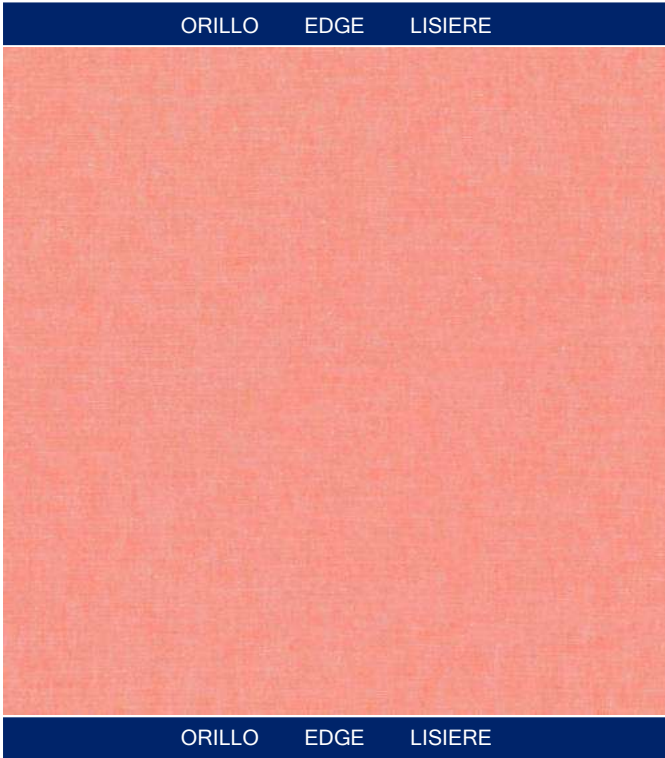
11.11379/30

11.11379/8A

11.11379/5B



11.11379/51



RECYCLED VINTAGE PLAIN
Reference 11113738A

Composition: 70%PES 23%CO 7%LI (49%REC)
Useful width in cms: 300 cm.
Pattern repeat (height): 1
Pattern repeat (width): 1
Repeat for cutting cm.: 1
Design direction: Railroded
Finished edge: With lead cord
Weight gsm: 112
Ligth fastness (max 8): 6
Pilling (max 5): 2/3
Shrinkage (warp): -0,50 %
Shrinkage (weft): -2,00 %

